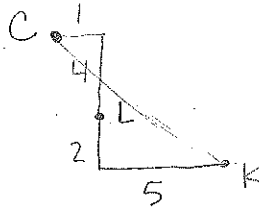


8. Kevin lives two blocks south and five blocks east of the library. Ciara lives four blocks north and one block west of the library. At what point could they meet exactly between their houses?

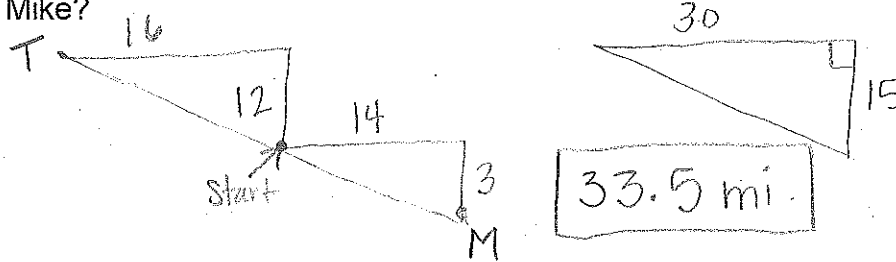
library is origin



$K(5, -2)$ $C(1, 4)$

$(3, 3)$ 3 blocks N and 3 blocks E of the library.

9. Tanya and Mike started out in the same spot. Tanya drove 12 miles north, then 16 miles west. Mike drove 14 miles east, then 3 miles south. How far apart are Tanya and Mike?



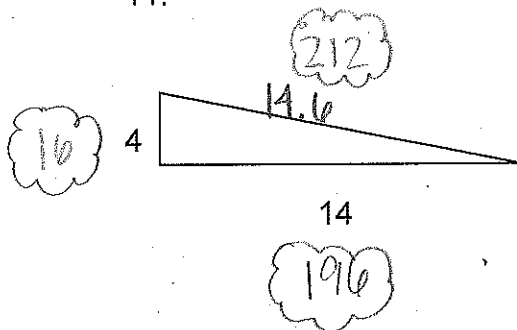
10. In Question 9, if Mike and Tanya wanted to meet in a spot directly in between their new locations, where would they meet?

Starting pt. is origin $T(-16, 12)$ $M(14, -3)$

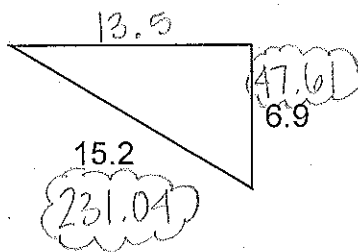
midpt: $\left(\frac{-2}{2}, \frac{9}{2}\right) \rightarrow (-1, 4.5)$ 1 blk W and 4.5 blks N of the starting pt.

Find the missing side of the triangle. For 14-16, draw a diagram:

11.



12.



13.

